

# Attachable indicator with LED and switch points for pressure transmitters with M 12x1 or MIL-plug Model A-AS-1

WIKA Data Sheet AC 80.09

## Applications

- Machine tools
- Test benches
- Pneumatic applications
- Packaging machines
- General industrial applications

## Special features

- 4-digit display range -999 ... 6000
- Fully adjustable on site without master instrument
- Ingress protection IP 65
- Accuracy  $\leq \pm 0.5\%$  of span  $\pm 1$  digit
- Switch points freely programmable

## Description

The attachable indicator model A-AS-1 is an ideal solution for a local display of the process pressure, at the same time providing transmission.

Due to its universal programmability and simple mounting the attachable indicator can also be easily installed on pressure transmitters which are already in use. Its scale can be fully adjusted directly on site without master instrument. Power is directly supplied by the 4 ... 20 mA-loop, i.e. no extra power supply is required.

Unit (psi, bar, kPa, MPa and kg/cm<sup>2</sup>), decimal point, display range, zero point and switch points can be adjusted via the control keys.

The seven millimetre high, red LED display is easy to read. In order to be able to adapt the indicator to the application, it is available in two different versions: connection to the transmitter at the bottom or at the back.



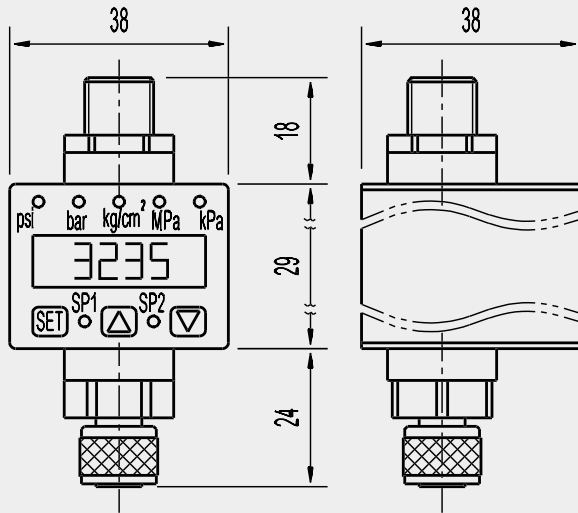
Fig. Attachable indicator model A-AS-1



## Dimensions in mm

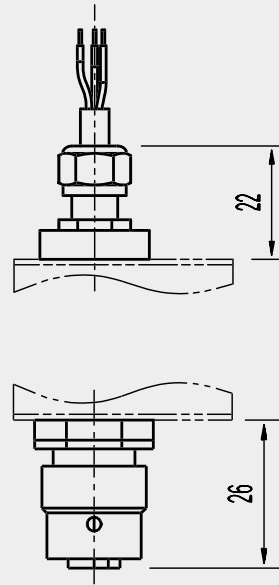
### Connection to the transmitter at the bottom

Circular connector  
M 12x1, 5-pin

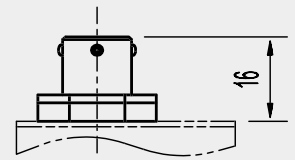


Circular connector (female)  
M 12x1, 4-pin

Flying leads



MIL-connector, 4-pin



MIL-connector (female),  
4-polig

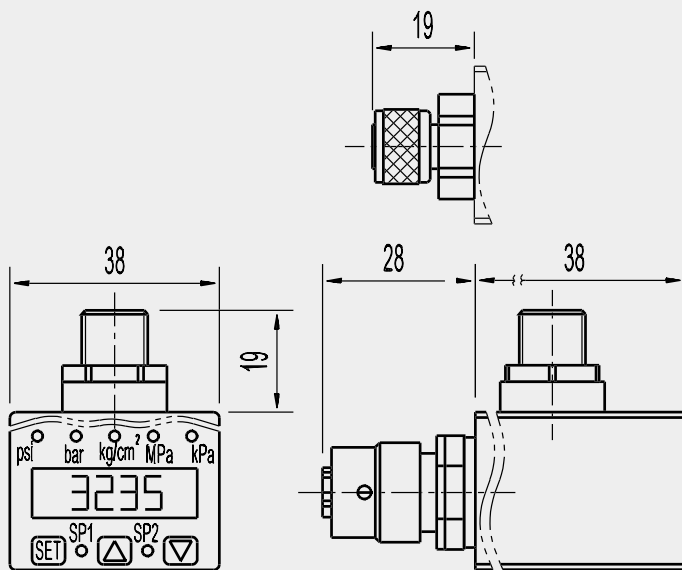
### Connection of the transmitter at the back

Circular connector  
M 12x1, 5-pin

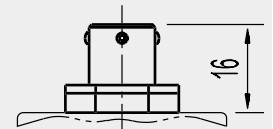
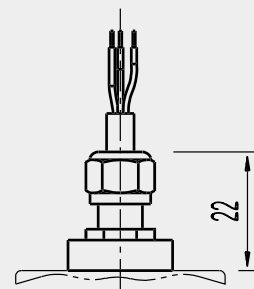
Circular connector (female)  
M 12x1, 4-pin

Flying leads


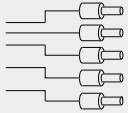
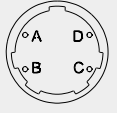
MIL-connector, 4-pin

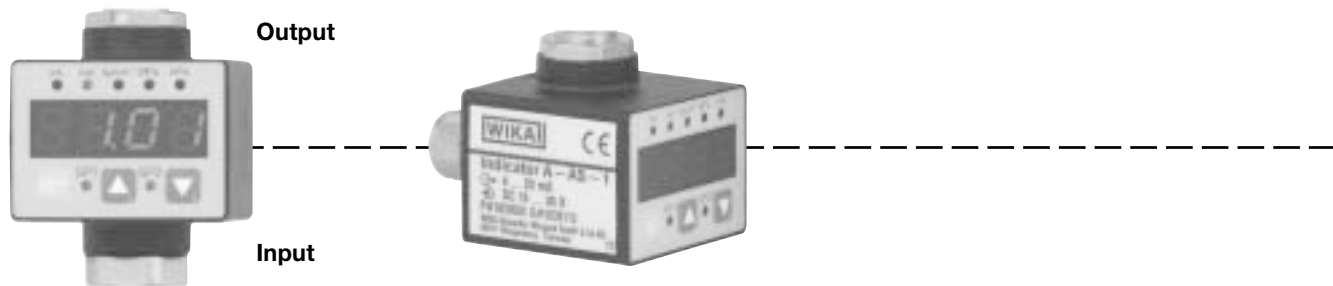



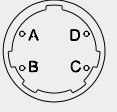
MIL-connector (female),  
4-pin



## Wiring details

Plug- Pin		2-wire Execution current	3-wire Execution voltage
<b>Circular connector M 12x1, 5-pin</b>			
	1	Power supply +Ub, S+	Power supply +Ub
	2	Switch out1	Switch out1
	3	Power supply 0V, S-	Power supply 0V, Switch ground, S-
	4	Switch ground (potential-free)	Signal S+
	5	Switch out2	Switch out2
<b>Flying leads</b>			
	red	Power supply +Ub, S+	Power supply +Ub
	black	Power supply 0V, S-	Power supply 0V, Switch ground, S-
	yellow	Switch ground (potential-free)	Signal S+
	brown	Switch out1	Switch out1
	orange	Switch out2	Switch out2
<b>MIL-connector, 4-pin</b>			
	A	Power supply +Ub, S+	Power supply +Ub
	B	Switch ground (potential-free)	Signal S+
	C	Switch out1	Switch out1
	D	Power supply 0V, S-	Power supply 0V, Switch ground, S-



Plug- Pin		2-wire Execution current	3-wire Execution voltage
<b>Circular connector (female) M 12x1, 4-pin</b>			
	1	Power supply +Ub, Signal S+	Power supply +Ub
	2	--	--
	3	Power supply 0V, S-	Power supply 0V
	4	--	Signal
<b>MIL-connector (female), 4-pin</b>			
	A	Power supply +Ub, Signal S+	Power supply +Ub
	B	Power supply 0V, S-	Power supply 0V, S-
	C	--	Signal S+
	D	--	--

Modifications may take place and materials specified may be replaced by others without prior notice.  
Specifications and dimensions given in this leaflet represent the state of engineering at the time of printing.

