

# 3-Valve manifold IV304

Center distance 37 mm

For differential pressure instruments

E 09.20.01

Ed.22.01

The 3-valve manifold consists of two shut-off valves and one pressure compensating valve. The shut-off valves separate the process from the differential pressure measuring instrument. The pressure compensating valve enables the compensation between + side and - side to avoid one-sided overpressure during commissioning and operation.

## Type IV304

Valve position Angled

Pressure compensating valve in front

Center distance gauge side 37 mm

For 732.51 differential pressure gauge

For DPGS43 differential pressure gauge with switch contacts

For DPGT43 differential pressure gauge with output signal

Material body stainless steel 316L

Material packing PTFE

Nominal pressure 6000 psi / 420 bar

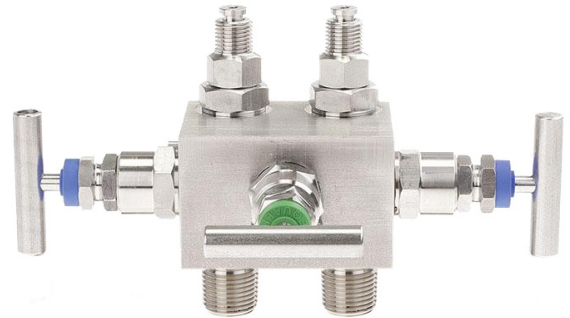
With bracket holes for mounting with bracket

NACE Sour Gas Service

Inspection certificate 3.1 EN 10204

all wetted parts material

For more information: [WIKA Datasheet AC 09.23](#)



## 3-Valve manifold type IV304

Item	Instrument side	Process side	Valve position	Center distance	Packing
37105018	G1/4 male swivel	G1/2 male	Angled	37 mm	PTFE
48752900	G1/4 male swivel	1/2 NPT male	Angled	37 mm	PTFE
81640930	G1/2 male swivel	G1/2 male	Angled	37 mm	PTFE
81640921	G1/2 male swivel	1/2 NPT male	Angled	37 mm	PTFE
81640922	G1/2 female swivel	1/2 NPT male	Angled	37 mm	PTFE