

Pressure
Temperature
Level

Measurement technology for industrial boiler systems



WIKAI

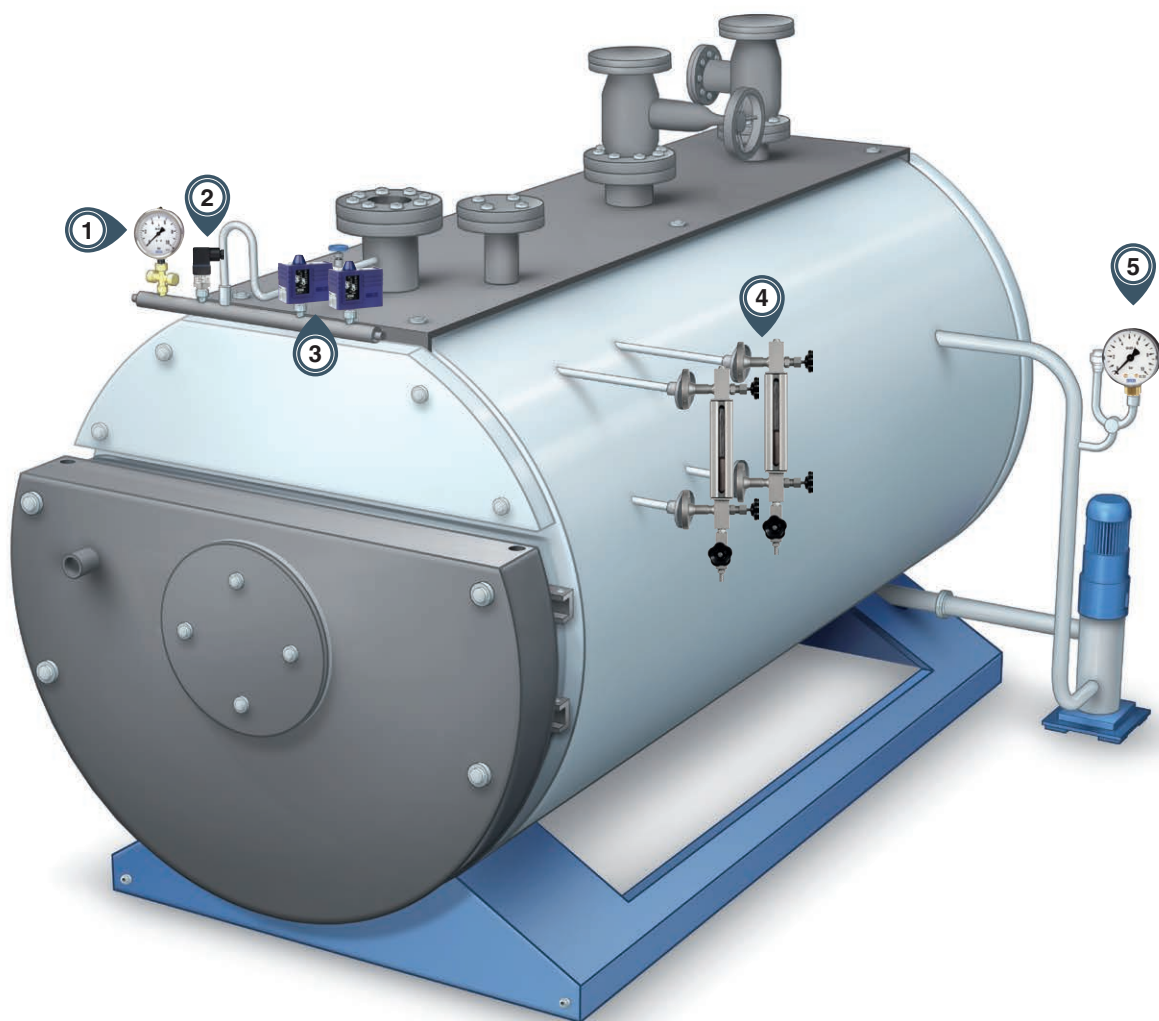
Part of your business

Industrial steam or hot-water boiler systems

Industrial steam or hot-water boiler systems are used in the food industry, in hospitals, in the automotive industry and many other areas. A whole series of components work hand in hand: for example boilers, economisers, oil pressure control, water treatment, return flow temperature safeguard and others. The goal is the efficient provision of energy in the form of hot water or steam.

As a manufacturer of modules for industrial plants of this magnitude, you know how important it is to be able to rely on every single component, one hundred percent. As a supplier of safety-relevant measuring and switching instruments, we understand this responsibility. That is why WIKA focuses on the **reliability and accuracy** of the measuring instruments, as well as a high **delivery performance**.

The graphic indicates, representative for the different components of a boiler system, the most important measuring instruments and switches on a steam boiler. These include a sight glass level indicator, which is a mandatory part of a steam boiler through DIN EN 12953-6.

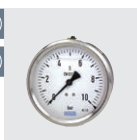


Legend – Measuring points:

- | | |
|------------------------|-------------------------------|
| ① Pressure gauge | ④ Sight glass level indicator |
| ② Pressure transmitter | ⑤ Pressure gauge |
| ③ Pressure switch | |

Pressure

①
⑤



Pressure gauge
111.10
213.53
232.50, 233.50
212.20



Capsule pressure gauge
612.20



Differential pressure gauge
DPGT40
DPGT43,100

②



Pressure transmitter
A-10, S-11, S-20

③



Pressure switch, maximum pressure limiter
PSM-520, PSM-550



Pressure switch, PSM02



Accessories, shut-off valve for pressure measuring instruments
910.11

Temperature



Resistance thermometer
TR30, TR34



Dial thermometer
A52



Expansion thermometer with switch contact
SB15, SW15

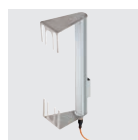


Thermowell
SWT52G

④



Sight glass level indicator
LGG-E, LGG-T, LGG-R



Accessories for sight glass level indicators
LGI



Bypass level indicator
BNA

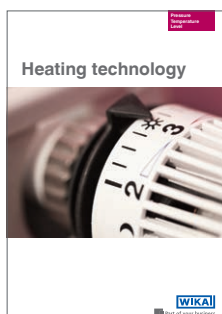
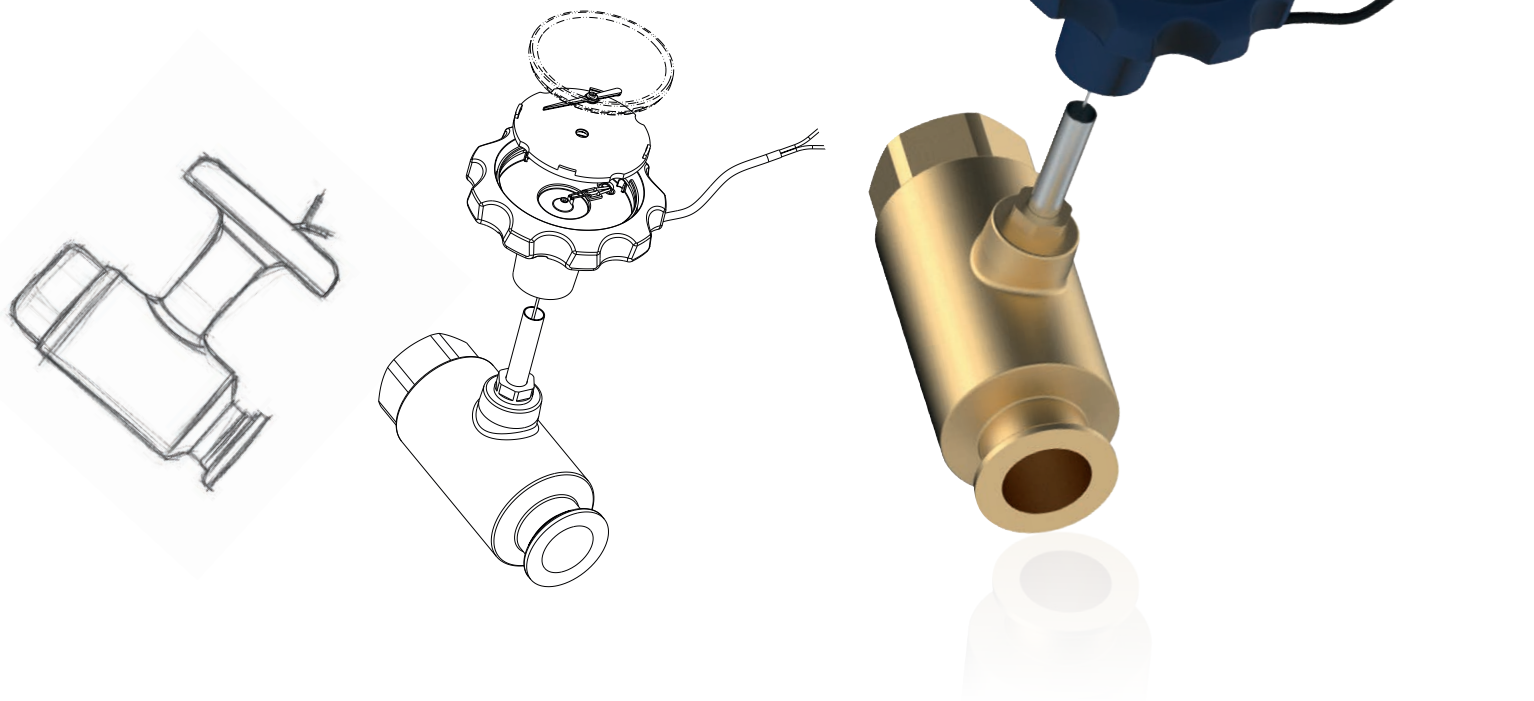


Accessories for bypass level indicators
BGU, MRF, BLR, BMD, BLM, BFT

WIKA offers you a comprehensive product portfolio for the measurement parameters of pressure, temperature and level. Furthermore, we offer you maximum flexibility through **innovative and customised product developments.**

From idea to completed implementation

From idea to completed implementation: Benefit from our experienced development and design-engineering staff in order to break new ground. Together with us, develop your concept for measurement technology so that it fits perfectly into your future system solutions. Regardless of whether you are modifying an existing measuring system with us or developing a new measuring instrument from the ground up, you can benefit from our many years of practical experience and our knowledge of the key aspects of your market segment.



Whether in residential or office accommodation, in private households or public buildings; whether with wood, oil, gas or solar power: Modern heating technology enables you to obtain an efficient and sustained supply of heat and hot water. This conserves resources and the environment. Furthermore, it is subject to stringent standards and regulations.

WIKAI offers manufacturers and distributors a comprehensive range of pressure, temperature and level measuring instruments tailored to suit a wide range of requirements. With this brochure, we would like to provide you with an overview of our products and services for heating technology.

WIKAI segment brochure
"Heating technology"

WIKAI Alexander Wiegand SE & Co. KG
Alexander-Wiegand-Straße 30 · 63911 Klingenberg · Germany
Tel. +49 9372 132-0 · Fax +49 9372 132-406
info@wika.de · www.wika.de

